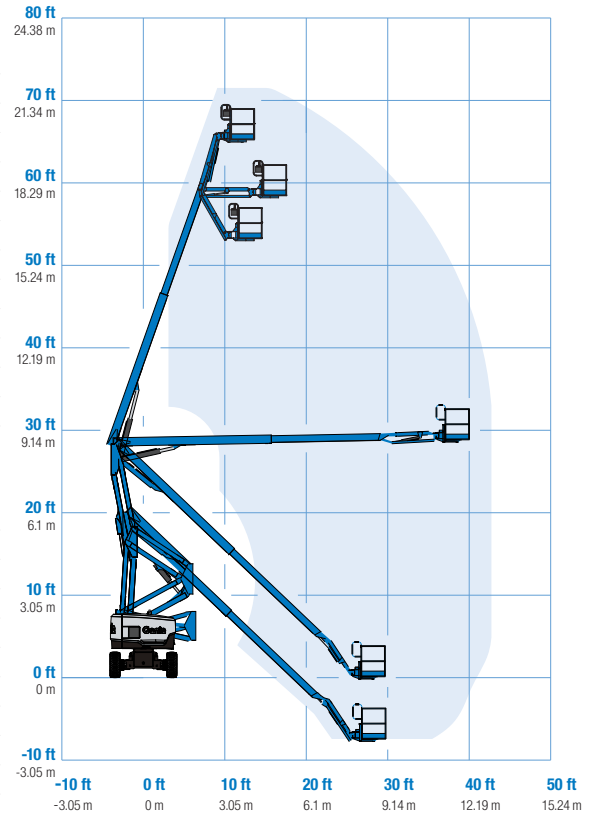


Specifications

MODEL	Z-62/40	
Measurements	Metric	US
Working height maximum*	20.87 m	67 ft 11 in
Platform height maximum	18.87 m	61 ft 11 in
Horizontal reach maximum	12.42 m	40 ft 9 in
Up and over clearance maximum	7.80 m	25 ft 7 in
▲ Platform length	0.91 m	3 ft
▲ Platform width	2.44 m	8 ft
▲ Height - stowed	2.56 m	8 ft 6 in
Height - transport (jib tucked under)	2.90 m	9 ft 6 in
▲ Length - stowed	9.25 m	30 ft 4 in
Length - transport (jib tucked under)	7.57 m	24 ft 10 in
▲ Width	2.49 m	8 ft 2 in
▲ Wheelbase	2.51 m	8 ft 3 in
▲ Ground clearance - center	0.38 m	1 ft 3 in

Range Of Motion Z-62/40



Productivity

Lift capacity	227 kg	500 lbs
Platform rotation	160°	
Vertical jib rotation	135°	
Turntable rotation	360° continuous	
Turntable tailswing	zero	
Drive speed - stowed	5.1 km/h	3.2 mph
Drive speed - raised**	1.1 km/h	0.68 mph
Gradeability - stowed***	45%	
Turning radius - inside	2.79 m	9 ft 2 in
Turning radius - outside	5.72 m	18 ft 9 in
Controls	12 V DC proportional	
Tyres	355/55D625	

Power

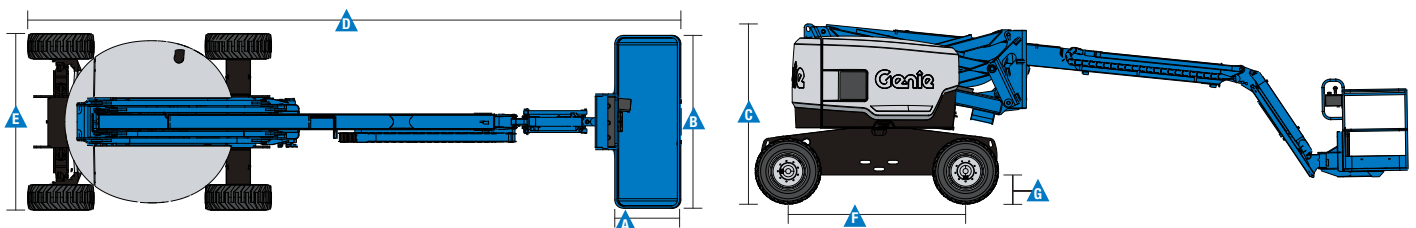
Power source	Deutz diesel D2011L03i 3 cylinder diesel 35.8 kW (48 hp)	
Auxiliary power unit	12 V DC	
Hydraulic tank capacity	132.5 L	35 gal
Fuel tank capacity	136.3 L	36 gal

Weight****

	10,886 Kg	23,997 lbs
--	-----------	------------

Standards Compliance

AS 1418.10



* The metric equivalent of working height adds 2 m to platform height. U.S. adds 6 ft to platform height.
 ** In lift mode (platform raised), the machine is designed to operate on firm, level surfaces only.
 *** Gradeability applies to driving on slopes. See operators manual for details regarding slope ratings.
 **** Weight will vary depending on options and/or country standards.
 ***** Tier 4f engines available in US only.

Features

Standard Features

Measurements

- 20.87 m (67 ft 11 in) working height
- 12.42 m (40 ft 9 in) horizontal reach
- 7.80 m (25 ft 7 in) up and over clearance
- Up to 227 kg (500 lbs) lift capacity

Productivity

- Self-leveling platform
- Hydraulic platform rotation
- Proportional joystick controls
- Drive enable
- AC power cord to platform
- Horn
- Hour meter
- Tilt alarm
- Descent alarm
- Zero tailswing
- 360° continuous turntable rotation
- Locking turntable covers
- Positive traction drive
- 2 speed wheel motors
- Hydraulic oil cooler
- Dual flashing beacons
- Thumb rocker steer
- Lockable platform control box covers

Power

- 12V DC auxiliary power
- Engine protection package
- Anti-restart engine protection
- Auto engine fault shutdown
- Intake air heater

Jib

- 1.52 m (5 ft) jib boom

Engine

- Deutz diesel, 35.8 kW (48 hp)

Drive

- 4WD



Standard Features

Axle

- Active oscillation

Tyres

- Rough terrain foam-filled tyres

Options & Accessories

Productivity Options

- Platform swing gate
- Half mesh platform inserts with swing gate
- Air line to platform
- Biodegradable hydraulic oil
- Deluxe Hostile environment kit
- Work light package
- Operator Protective Structure
- Operator Protective Alarm
- Rough terrain non-marking foam-filled tyres

Power Options

- 7 kVA hydraulic generator (240 V 50 Hz)
- Cold Weather Packages
- Diesel catalytic purifier muffler
- 240 V power to platform

Genie – Toll free number 1800 788 633

Brisbane

HEAD OFFICE
33 Kimberley Street
Darra QLD 4076

Sydney

74 Glendenning Road
Glendenning NSW 2761

Melbourne

374 Hammond Road
Dandenong VIC 3175

Adelaide

16-18 Nixon Road
Wingfield SA 5013

Perth

126 Sheffield Road
Welshpool WA 6106

Darwin

33 McCourt Road
Yarrawonga NT 0830

Genie USA

18340 NE 76th Street
P.O. Box 97030
Redmond, Washington
98073-9730

Distributed By:

Effective Date: April, 2015. Product specifications and prices are subject to change without notice or obligation. The photographs and/or drawings in this document are for illustrative purposes only. Refer to the appropriate Operator's Manual for instructions on the proper use of this equipment. Failure to follow the appropriate Operator's Manual when using our equipment or to otherwise act irresponsibly may result in serious injury or death. The only warranty applicable to our equipment is the standard written warranty applicable to the particular product and sale and we make no other warranty, express or implied. Products and services listed may be trademarks, service marks or trade names of Terex Corporation and/or their subsidiaries in the USA and many other countries. Genie is a registered trademark of Terex South Dakota, Inc. © 2015 Terex Corporation.