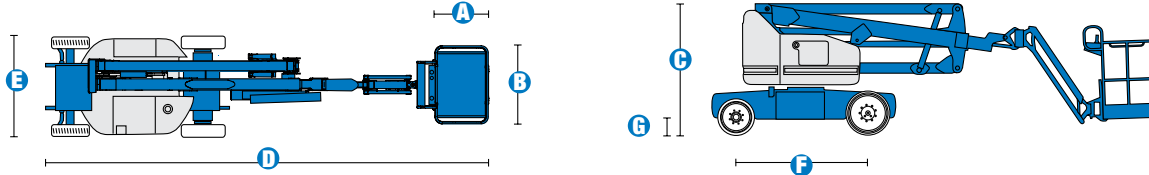


# Specifications



| MODEL                         | Z™-40/23N RJ |            |
|-------------------------------|--------------|------------|
| MEASUREMENTS                  | Metric       | US         |
| Working height maximum*       | 14.32 m      | 46 ft 5 in |
| Platform height maximum       | 12.32 m      | 40 ft 5 in |
| Horizontal reach maximum      | 6.91 m       | 22 ft 8 in |
| Up and over clearance maximum | 6.48 m       | 21 ft 3 in |
| A Platform length             | 0.76 m       | 2 ft 6 in  |
| B Platform width              | 1.17 m       | 3 ft 10 in |
| C Height - stowed             | 1.98 m       | 6 ft 6 in  |
| D Length - stowed             | 6.53 m       | 21 ft 5 in |
| E Width                       | 1.50 m       | 4 ft 11 in |
| F Wheelbase                   | 1.96 m       | 6 ft 5 in  |
| G Ground clearance - centre   | 0.18 m       | 7 in       |

| PRODUCTIVITY             |                     |                     |
|--------------------------|---------------------|---------------------|
| Lift capacity            | 227 kg              | 500 lbs             |
| Platform rotation        | 180°                | 180°                |
| Vertical jib rotation    | 128°                | 128°                |
| Horizontal jib rotation  | 180°                | 180°                |
| Turntable rotation       | 355° non-continuous |                     |
| Turntable tailswing      | 0.13 m              | 5 in                |
| Drive speed - stowed     | 7.2 km/h            | 4.5 mph             |
| Drive speed - raised**   | 1.1 km/h            | 0.68 mph            |
| Gradeability - stowed*** | 30%                 | 30%                 |
| Turning radius - inside  | 0.87 m              | 2 ft 11 in          |
| Turning radius - outside | 3.20 m              | 10 ft 6 in          |
| Controls                 | 24V DC proportional |                     |
| Tyres - front            | 56 x 18 x 45 cm     | 22 x 7 x 17.75 in   |
| Tyres - rear             | 64 x 18 x 45 cm     | 25.6 x 7 x 17.75 in |

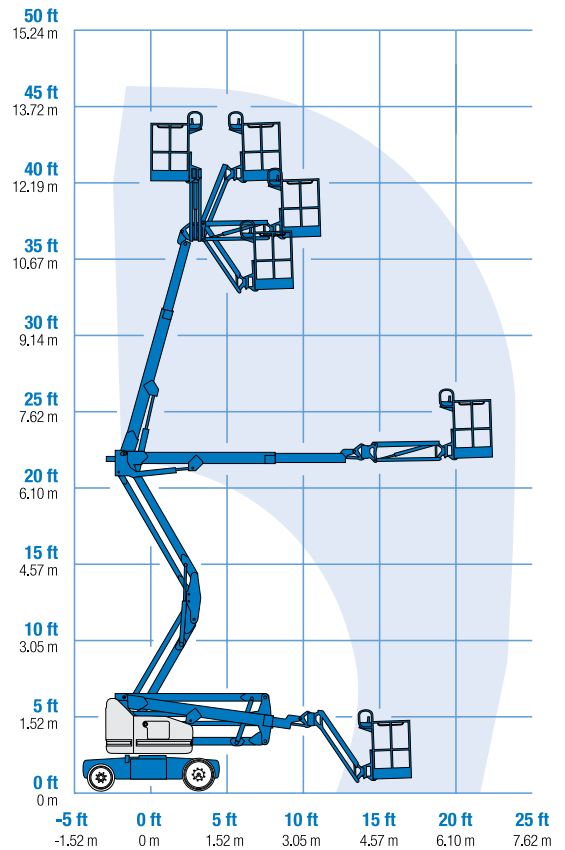
| POWER                   |                                             |                |
|-------------------------|---------------------------------------------|----------------|
| Power source            | 48V DC (eight 6V batteries) 350 Ah capacity |                |
| Drive system            | 29V 3 phase AC                              | 29V 3 phase AC |
| Auxiliary power unit    | 24V DC                                      | 24V DC         |
| Hydraulic tank capacity | 30.2L                                       | 8 gal          |

| WEIGHT**** |          |            |
|------------|----------|------------|
|            | 6,940 kg | 15,300 lbs |

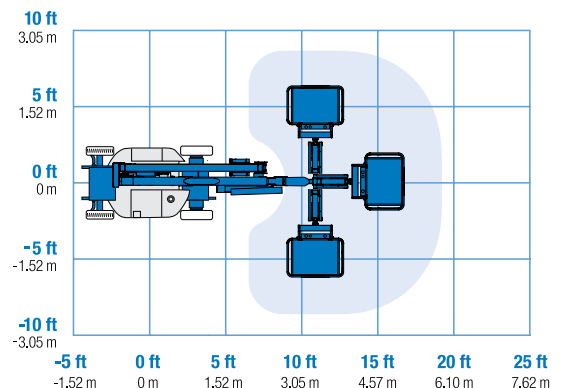
**STANDARDS COMPLIANCE** ANSI A92.5, CSA B354.4, CE Compliance, AS 1418.10

\* The metric equivalent of working height adds 2 m to platform height. U.S. adds 6 ft to platform height.  
 \*\* In lift mode \*(platform raised), the machine is designed to operated on firm, level surfaces only.  
 \*\*\* Gradeability applies to driving on slopes. See operator's manual for details regarding slope ratings.  
 \*\*\*\* Weight will vary depending on options and/or country standards.

## RANGE OF MOTION Z™-40/23N RJ



## JIB RANGE OF MOTION Z™-40/23N RJ



## Features

### STANDARD FEATURES

#### MEASUREMENTS

##### Z™-40/23N RJ

- 14.32 m (46 ft 5 in) working height
- 6.91 m (22 ft 8 in) horizontal reach
- 6.48 m (21 ft 3 in) up and over clearance
- Up to 227 kg (500 lbs) lift capacity

#### PRODUCTIVITY

- 1.17 m (3 ft 10 in) steel platform
- 1.22 m (4 ft) horizontal rotating jib boom 130° with working range
- 2WD Electric AC
- Solid rubber non-marking
- 1.50 m (4 ft 11 in) width
- 0.87 m (2 ft 11 in) inside turning radius
- Self-leveling platform
- Hydraulic platform rotation
- Fully proportional controls
- Thumb rocker steer
- Drive enable
- Horn
- Hour meter
- Tilt alarm
- Alarm package
- Hydraulic filter condition monitor
- 355° non-continuous turntable rotation
- Variable speed high efficiency hydraulic power unit
- AC electric drive system
- Traction control
- On-board easy to understand diagnostics
- Dual flashing beacons

#### POWER

- 48 V DC deep cycle battery pack
- 24 V DC auxiliary power
- Universal 30A battery smart charger
- Battery charge indicator
- Low battery voltage interrupt

### OPTIONS & ACCESSORIES

#### PRODUCTIVITY

- Platform swing gate
- Half-mesh platform inserts with swing gate
- Air line to platform
- Fire resistant hydraulic oil
- Biodegradable hydraulic oil
- Hostile environment package
- Tool tray
- Fluorescent tube caddy
- Platform work lights
- Front driving lights
- Lockable platform control box cover
- Retained key selector switch

#### POWER OPTIONS

- 240 V power to platform



### Genie Australia – Toll free number 1800 788 633

**Brisbane (Head Office)**  
33 Kimberley Street  
Darra QLD 4076

**Sydney**  
74 Glendenning Road  
Glendenning NSW 2761

**Melbourne**  
374 Hammond Road  
Dandenong VIC 3175

**Perth**  
126 Sheffield Road  
Welshpool WA 6106

### Genie United States Distributed by:

18340 NE 76th Street  
P.O. Box 97030  
Redmond, Washington  
98073-9730

Effective Date: April 2012. Product specifications and prices are subject to change without notice or obligation. The photographs and/or drawings in this document are for illustrative purposes only. Refer to the appropriate Operators' Manual for instructions on the proper use of this equipment. Failure to follow the Operators Manual when using our equipment or to otherwise act irresponsibly may result in serious injury or death. The only warranty applicable to our equipment is the standard written warranty applicable to the particular product and sale and we make no other warranty, express or implied. Products and services listed may be trademarks, service marks, or trade names of Terex Corporation, Terex South Dakota, Inc., and/or their subsidiaries in the USA and other countries. All rights reserved. Terex is a registered trademark of Terex Corporation in the USA and many other countries. Genie is a registered trademark of Terex South Dakota, Inc. in the USA and many other countries. ©2009 Terex Corporation.